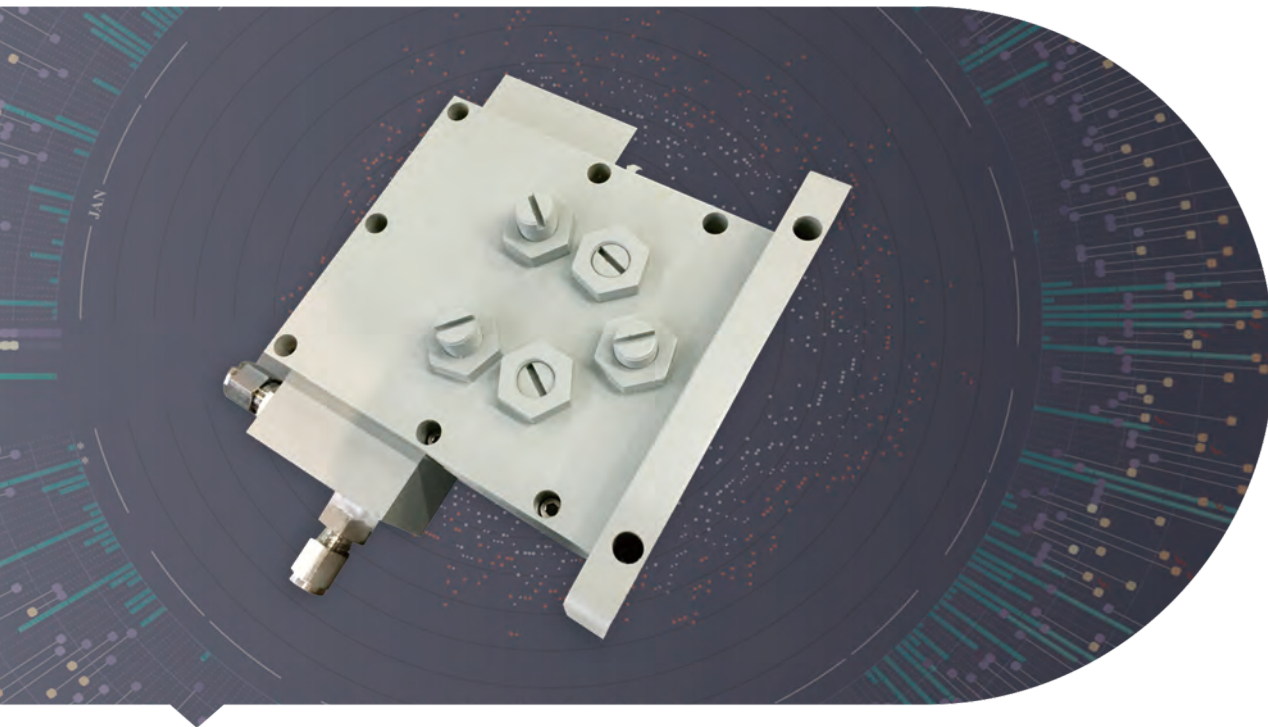


MICROWAVE WATER LOAD



→ Features

- Frequency range: 915 MHz and 2450MHz
- Waveguide size: WR340, WR430 and WR975
- Handling power: 6 KW, 10 KW, up to 20kW CW
- Cooling: Water or water cooled
- Flange: Cover and Grooved

→ Description

Dolph Microwave Water Load fully absorbs reflected microwaves with high power handling light weight and small size. Cooling type is optional. Both standard and customized can be chosen upon request.

Model	WR Type	Frequency (MHZ)	VSWR	Handling Power (KW)
DH-9WWHPL915PA...	WR975	915±25	1.2	20
DH-9WWHPL915PA...	WR975	915±25	1.2	75
DH-9WWHPL915PA...	WR975	915±25	1.2	100
DH-14WWHPL1300PA...	WR650	1300±25	1.2	10
DH-22WWHPL2450PA...	WR430	2450±25	1.2	2-3-5-10
DH-22WWHPL2450PA...	WR430	2450±25	1.2	15
DH-26WWHPL2450PA...	WR340	2450±25	1.2	2-3-5-6
DH-26WWHPL2450PA...	WR340	2450±25	1.2	15
DH-32WWHPL2450PA...	WR284	2450±25	1.2	3
DH-32WWHPL2450PA...	WR284	2450±25	1.2	6

Cooling	Water Flow	Water Pressure	Water Injection	Size(mm)
Water-Direct	3-5L/min	0.14MPa	Quick Connector	260*257*213
Water-Direct	3-5L/min	0.14MPa	Quick Connector	260*257*213
Water-Direct	3-5L/min	0.14MPa	Quick Connector	308*257*557
Water-Direct	3-5L/min	0.14MPa	Quick Connector	300*280*150
Water-Direct	3-5L/min	0.14MPa	Quick Connector	170*180*106
Water-Direct	3-5L/min	0.14MPa	Quick Connector	212*161*180
Water-Direct	3-5L/min	0.14MPa	Quick Connector	130*152*95
Water-Direct	3-5L/min	0.14MPa	Quick Connector	170*138*142
Water-Direct	3-5L/min	0.14MPa	Quick Connector	183*335*112
Water-Direct	3-5L/min	0.14MPa	Quick Connector	183*335*112

Flange Type	Inside Finish	Body Finish	Material
Cover/Grooved	Iridite per MIL-C-5541	Anticorrosion Black Painted	Al
Cover/Grooved	Iridite per MIL-C-5541	Anticorrosion Black Painted	Al
Cover/Grooved	Iridite per MIL-C-5541	Anticorrosion Black Painted	Al
Cover/Grooved	Iridite per MIL-C-5541	Anticorrosion Black Painted	Al

Ordering Information

DH - 26 WWHPL 2450 P A

DH	Dolph Microwave
26	Waveguide Type WR340
WWHPL	Water Load
2450	Freq. 2450 MHz
P	Flange Cover
M	Flange Grooved
A	Material Al