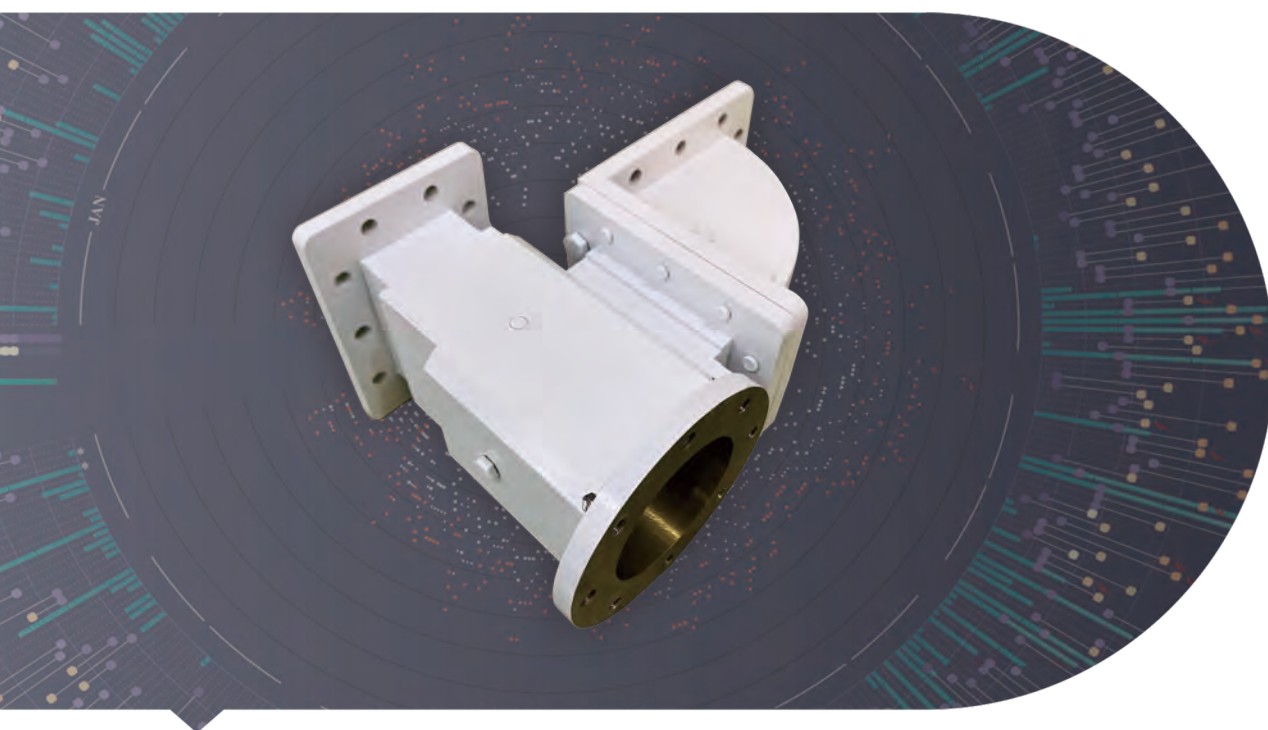


# OMT

## (Orthogonal Mode Transducer)



### → Features

Frequency bands: C, X, Ku, Ka bands or others

Polarization: Linear/Circular, Dual or coaxial polarization

VSWR: 1.2:1

Material: Al, Cu

### → Description

Dolph Microwave OMT is optional in different waveguide band with high VSWR, High isolation and high power handling. Common input port selected in standard waveguide size or special needs. Both standard and customized can be chosen upon request.

Model	Freq Range (Ghz)	VSWR	IL (dB)	Cross Pol.(dB)
DH-OMT-X-RT...	9.3-9.8	1.15	0.2	35
DH-OMT-C-RT...	5.8-7.2	1.2	0.1	35
DH-OMT-C-RT...	3.4-6.725	1.2	0.1	35
DH-OMT-Ku-RT...	10.7-14.5	1.25	0.1	30
DH-OMT-Ku-RT...	10.7-14.8	1.25	0.1	30
DH-OMT-DBS-RT...	15.0-22.0	1.4	0.5	35
DH-OMT-DBS-RT...	17.7-19.7	1.25	0.15	35
DH-OMT-Ka-RT...	17.7-31.0	1.25	0.15	35

Isolation (dB)	Waveguide Type	Com.Port	Material
35	WR90	TBD	Al
35	WR137	TBD	Al
35	WR137/WR229	TBD	Al
35	WR75	TBD	Al
35	WR75	TBD	Al
45	WR51	TBD	Al
40	WR42	TBD	Al
35	WR42/WR28	TBD	Al

### Ordering Information

DH - OMT - Ext.Ku - RT - X - 02

DH	Dolph Microwave
OMT	Orthogonal Mode Transducer
Ext. Ku	Extend Ku-band
RT	Transceiver
X	Cross Pol.
2	Second Generation