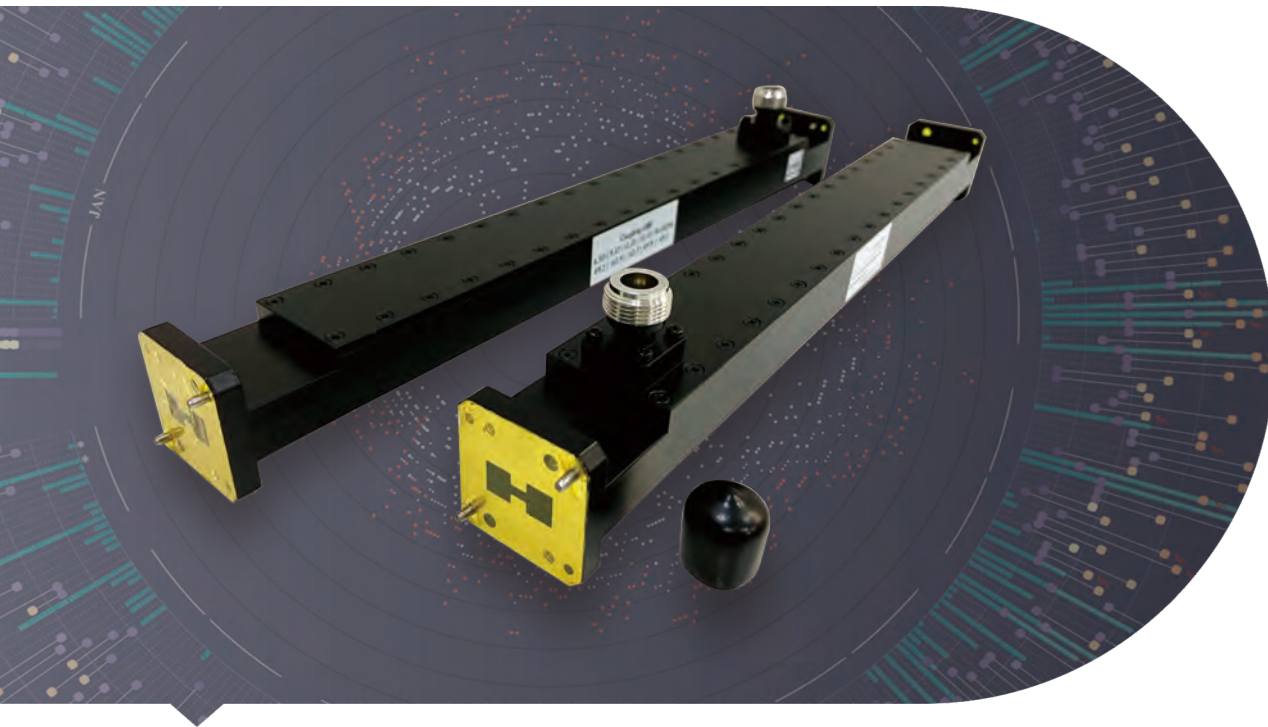


DOUBLE RIDGED WAVEGUIDE COUPLERS



→ Features

Waveguide size: WRD84 to WRD180

Coupling: 10-60dB

Material: Al and Cu

Flange: Cover and Grooved

Smallest coupling variation and flatness

→ Description

Dolph Microwave Double ridged waveguide couplers is high power handling, high coupling and high directivity. Both Al and Cu material are all available. Type available in Broadwall and loop coupler. Standard and customized can be chosen in mechanical configurations.

| Model | WR Type | Frequency (Ghz) | Operating Bandwidth | VSWR Max. | Coupling (dB) | Directivity (dB) | Accuracy (dB) | Freq. Sensitivity (dB) |
|---------------|---------|-----------------|---------------------|-----------|---------------|------------------|---------------|------------------------|
| DH-84DRWC... | WRD84 | 0.84-2.0 | Fullband | 1.1 | 10-60 | 20-35 | ± 0.7 | ± 1 |
| DH-150DRWC... | WRD150 | 1.5-3.6 | Fullband | 1.1 | 10-60 | 20-35 | ± 0.7 | ± 1 |
| DH-200DRWC... | WRD200 | 2.0-4.8 | Fullband | 1.1 | 10-60 | 20-35 | ± 0.7 | ± 1 |
| DH-250DRWC... | WRD250 | 2.6-7.8 | Fullband | 1.1 | 10-60 | 20-35 | ± 0.7 | ± 1 |
| DH-350DRWC... | WRD350 | 3.5-8.2 | Fullband | 1.1 | 10-60 | 20-35 | ± 0.7 | ± 1 |
| DH-475DRWC... | WRD475 | 4.75-11.0 | Fullband | 1.08 | 10-60 | 20-35 | ± 0.7 | ± 1 |
| DH-500DRWC... | WRD500 | 5.0-18.0 | Fullband | 1.08 | 10-60 | 20-35 | ± 0.7 | ± 1 |
| DH-580DRWC... | WRD580 | 5.8-16.0 | Fullband | 1.08 | 10-60 | 20-35 | ± 0.7 | ± 1 |
| DH-650DRWC... | WRD650 | 6.5-18.0 | Fullband | 1.08 | 10-60 | 20-35 | ± 0.7 | ± 1 |
| DH-750DRWC... | WRD750 | 7.5-18.0 | Fullband | 1.08 | 10-60 | 20-35 | ± 0.7 | ± 1 |
| DH-700DRWC... | WRD700 | 7.0-18.0 | Fullband | 1.08 | 10-60 | 20-35 | ± 0.7 | ± 1 |
| DH-110DRWC... | WRD110 | 11.0-26.5 | Fullband | 1.08 | 10-60 | 20-35 | ± 0.7 | ± 1 |
| DH-180DRWC... | WRD180 | 18.0-40.0 | Fullband | 1.1 | 10-60 | 20-35 | ± 0.7 | ± 1 |

| Coax. Interface | Coupling Directional | Flange Type | Inside Finish | Body Finish | Material |
|-----------------|----------------------|---------------|------------------------|-----------------------------|----------|
| Coax./Flange | Single/Dual | Cover/Grooved | Iridite per MIL-C-5541 | Anticorrosion Black Painted | Al/Brass |
| Coax./Flange | Single/Dual | Cover/Grooved | Iridite per MIL-C-5541 | Anticorrosion Black Painted | Al/Brass |
| Coax./Flange | Single/Dual | Cover/Grooved | Iridite per MIL-C-5541 | Anticorrosion Black Painted | Al/Brass |
| Coax./Flange | Single/Dual | Cover/Grooved | Iridite per MIL-C-5541 | Anticorrosion Black Painted | Al/Brass |

Ordering Information

DH - 650DR WC 50 N K P A

DH Dolph Microwave

650DR WRD650

WC Single Directional Couplers

WDC Dual Directional Couplers

WHC Single Loop Couplers

WDHC Dual Loop Couplers

50 Coupling 50 dB

N Connector Type

K Female

P Flange Cover

M Flange Grooved

A Material Al